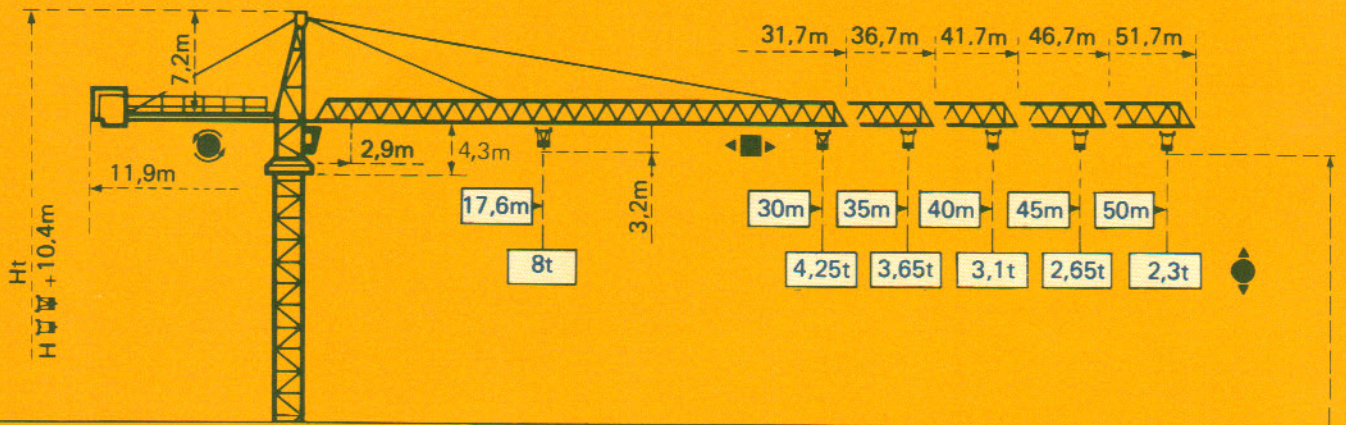


---

**TOPKIT F2/23B**

---

**POTAIN** 



Măture Mast Mast Mástil  
 □ 1,6m x 1,6m

Măture Mast Mast Mástil  
 □ 2m x 2m

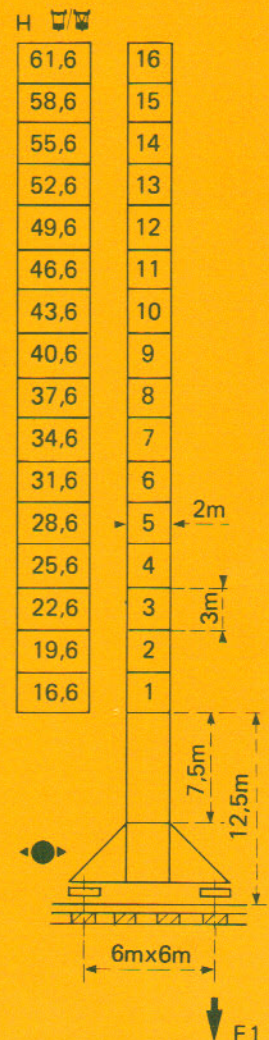
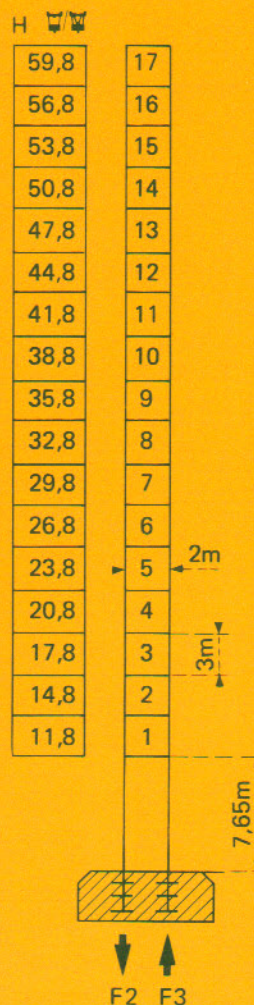
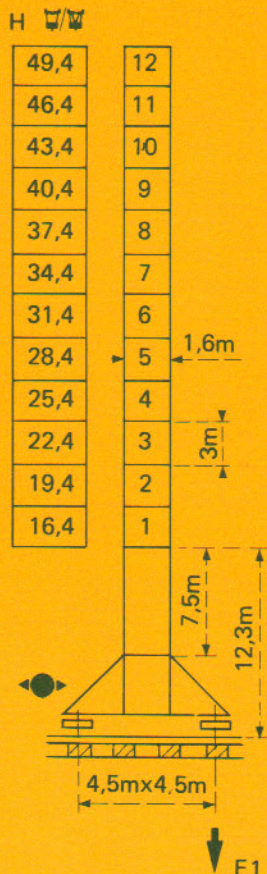
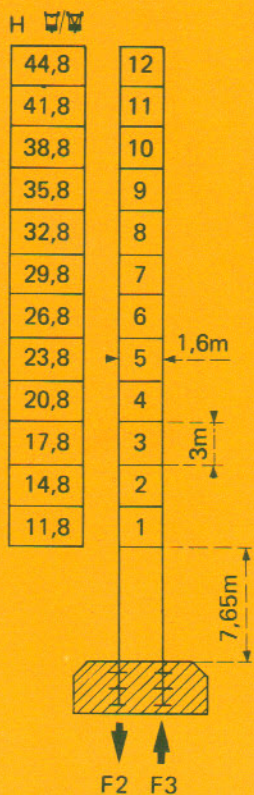
PA 452

SA 452


PA 664


VA 650


$$H_{\square} = H_{\square/\square} + 0,7m$$



F = Réactions Eckdrücke Reacciones Reacciones

|   |        |         |
|---|--------|---------|
| F2  | ● 95 t | ■ 118 t |
| F3  | ● 64 t | ■ 92 t  |
|  | 41 t   |         |

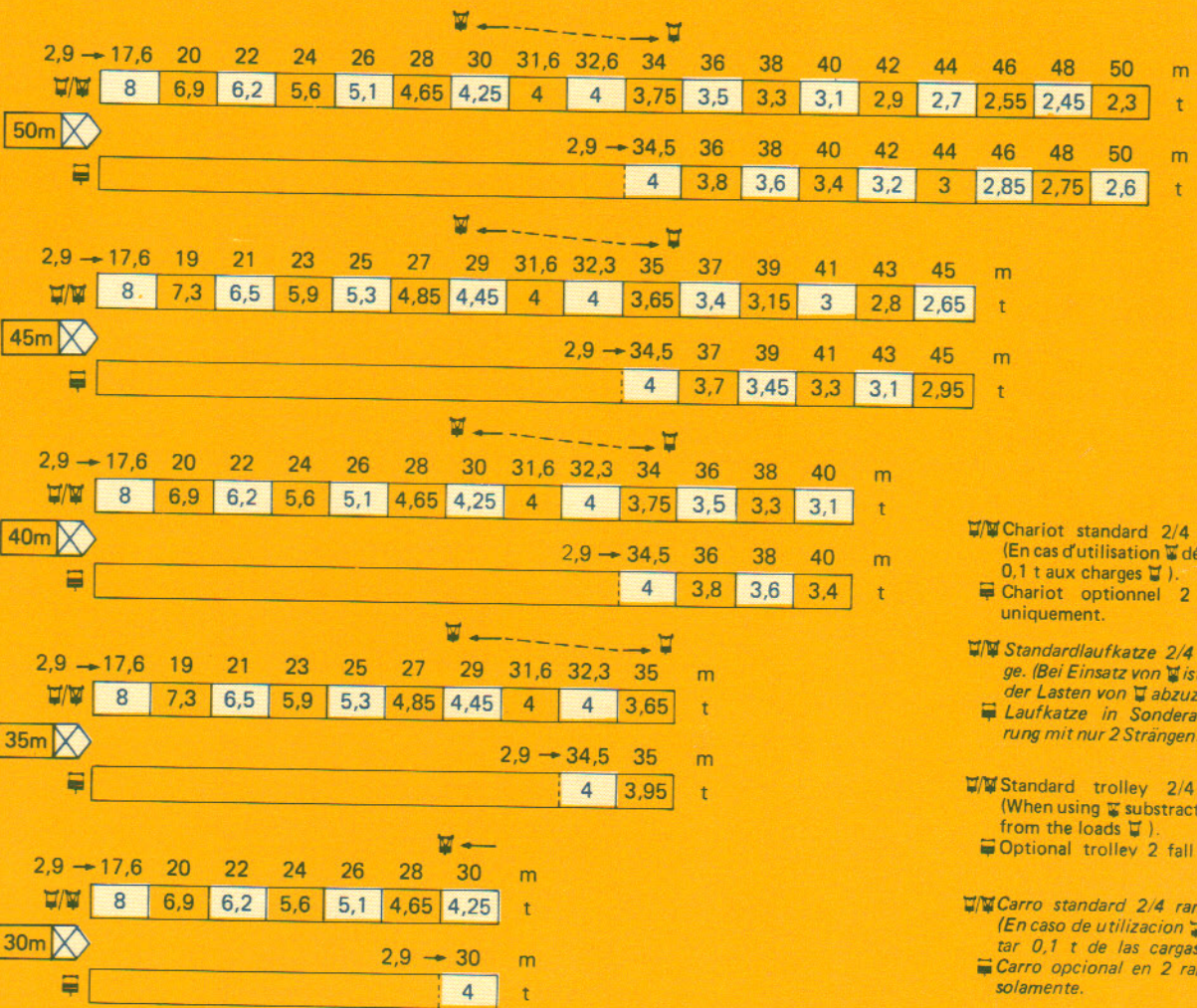
|   |        |        |
|---|--------|--------|
| F1  | ● 69 t | ■ 89 t |
|  | 50 t   |        |

|   |         |         |
|---|---------|---------|
| F2  | ● 106 t | ■ 192 t |
| F3  | ● 67 t  | ■ 157 t |
|  | 55 t    |         |

|   |        |         |
|---|--------|---------|
| F1  | ● 85 t | ■ 120 t |
|  | 65 t   |         |

# Courbes de charges Lastkurven Load curves Curvas de cargas

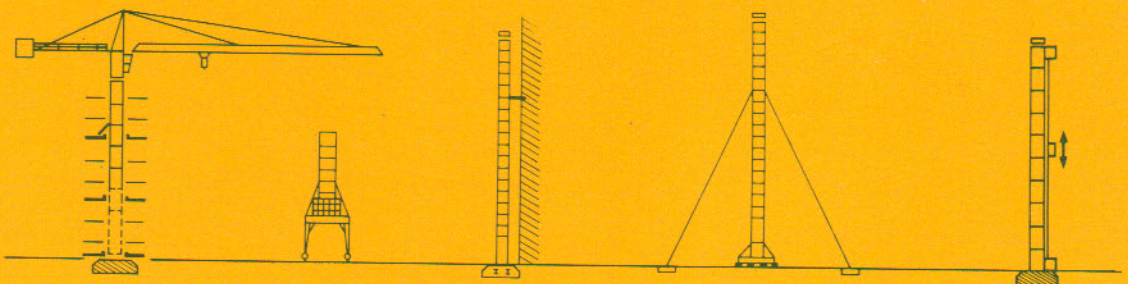
 Flèche Ausleger Jib Flecha



-  Chariot standard 2/4 brins. (En cas d'utilisation  déduire 0,1 t aux charges ).
-  Chariot optionnel 2 brins uniquement.
-  Standardlaufkatze 2/4 Stränge. (Bei Einsatz von  ist 0,1 t der Lasten von  abzuziehen.
-  Laufkatze in Sonderausführung mit nur 2 Strängen.
-  Standard trolley 2/4 fall. (When using  subtract 0,1 t from the loads ).
-  Optional trolley 2 fall only.
-  Carro standard 2/4 ramales. (En caso de utilización  quitar 0,1 t de las cargas ).
-  Carro opcional en 2 ramales solamente.


## Autres implantations Aufstellmöglichkeiten Mounting possibilities Otras implantaciones

Nous consulter  
Auf Anfrage  
Consult us  
Consultarnos




H > H maxi : nous consulter

- In service
- Hors service

 A vide sans lest avec flèche et hauteur maximum.


H > H maxi : Auf Anfrage

- In Betrieb
- Ausser Betrieb

 Ohne Last und Ballast mit Maximalausleger und Maximalhöhe.


H > H maxi : consult us

- In service
- Out of service

 Without load and ballast with longest jib and maximum height.

H > H máxi : Consultarnos

- En servicio
- Fuera de servicio

 Sin cargas, sin lastre con flecha y altura máxima.

Mécanismes *Antriebe* Mechanisms *Mecanismos*

|   |  |   |   |   | m/min   | t   |  | ch-PS<br>hp | kW        |     |   |                   |    |
|---|--|---|---|---|---|---|---|-------------|-----------|-----|---|-------------------|----|
| Levage<br><i>Heben</i><br>Hoisting<br><i>Elevación</i>  |   | 45 RCS<br>20 B  |    |  | 0 - 40  | 4   | 361 m<br>> 361 m*   | 45          | 33        |     |   |                   |    |
|   |  |                      |   |  | 0 - 80  | 2   |   |             |           |     |   |                   |    |
|   |  |   |    |  | 0 - 20  | 8   |   |             |           |     |   |                   |    |
|   |  |                      |   | 0 - 40  | 4   |   |   |             |           |     |   |                   |    |
|   |  |   |    | 33 PC<br>20 B   |  |  |   |             |           | 5,4 | 4 | 304 m<br>> 304 m* | 33 |
|   |  |                      |   |  |   | 29,5  |   |             |           | 4   |   |                   |    |
|   |   |   |   |  | 59  | 2   |   |             |           |     |   |                   |    |
|   |  |                      |   | 2,7   | 8   |   |   |             |           |     |   |                   |    |
|   |   |   |   | 14,5  | 8   |   |   |             |           |     |   |                   |    |
|   |  |                      |   | 29  | 4   |   |   |             |           |     |   |                   |    |
|   | Distribution - <i>Katzfahren</i><br>Trolleying - <i>Distribución</i>   |   |   | 6 DPC 4   | 7,5<br>30<br>60   |   |   | 3 - 6       | 2,2 - 4,4 |     |   |                   |    |
|   | Orientation - <i>Schwenken</i><br>Slewing - <i>Orientación</i>   |   |  | OMD 45  | 0 → 0,9<br>tr/min<br>U/min-rpm  |   |   | 2 x 6       | 2 x 4,4   |     |   |                   |    |
| Translation<br><i>Kranfahren</i><br>Travelling<br><i>Traslación</i>   | ▲ Standard <i>Standard</i><br>Standard <i>Standard</i><br>▲▲ Changement de poste<br><i>Umsetzen</i><br>Repositioning<br>Cambio de sitio<br>▲▲▲ Rapide <i>Schnell</i><br>Fast <i>Rápida</i> | SA 452  |  | ▲ RT 324 C1<br>2 V  | 12,5 - 25   |   |   | 2 x 7       | 2 x 5,2   |     |   |                   |    |
|   |  | ▲▲ RT 325 C1  |   | 16  |   |   | 2 x 5   | 2 x 3,7     |           |     |   |                   |    |
|   |  | R ≥ 9 m   | ▲▲▲ RC 446 AR<br>H ≤ 34,4 m   | 10 - 50   |   |   | 4 x 6,8   | 4 x 5       |           |     |   |                   |    |
|   |  | VA 650  | ▲ RT 443 A1<br>2 V  | 15 - 30   |   |   | 4 x 5   | 4 x 3,7     |           |     |   |                   |    |
|   |  |                    | ▲▲ RT 426<br>C1   | 16  |   |   | 2 x 6,5   | 2 x 4,8     |           |     |   |                   |    |
|   |  |   | ▲▲▲ RC 646 AR<br>H ≤ 43,6 m   | 10 - 50   |   |   | 4 x 6,8   | 4 x 5       |           |     |   |                   |    |
|   |  |   | R ≥ 12m   |   |   |   |   |             |           |     |   |                   |    |
| Puissance électrique nécessaire<br><i>Anschlusswert</i><br>Necessary electric power<br>Potencia eléctrica necesaria |  | 380 V<br>50 HZ<br> | Réseau - <i>Netzstrom</i> - Mains supply - <i>Red</i>                               |   |   |   | RCS : 60 kVA<br>PC : 50 kVA   |             |           |     |   |                   |    |
|   |  |   | Groupe électrogène<br><i>Stromaggregat</i><br>Generator set<br>Grupo electrogeno    |   |   |   | *   |             |           |     |   |                   |    |

\* Nous consulter - *Auf Anfrage* - Consult us - *Consultarnos*

**POTAIN** 

18, rue de Charbonnières B.P 173 - F 69130 ECULLY  
 Tél. (7) 833.81.81 - Télex 330 179  
 EXPORT 207, rue de Bercy - Tour MATTEI - 75012 PARIS  
 Tél. (1) 347.30.77 - Télex 215 483  
 POTAIN GmbH - D 6082 MÖRFELDEN - WALLDORF  
 Nordendstr. 79-87 - Postfach 420 - Tel. (6 105) 5091 - Telex 4 185745  
 POTAIN SUISSE S.A. - CH 5115 MÖRIKEN WILDEGG  
 Tel. 64.53.19.91 - Telex 68294

Ref. 8105 EZN5

Modifications réservées - Änderungen vorbehalten - Subject to modification - Modificaciones reservadas

Printed in France