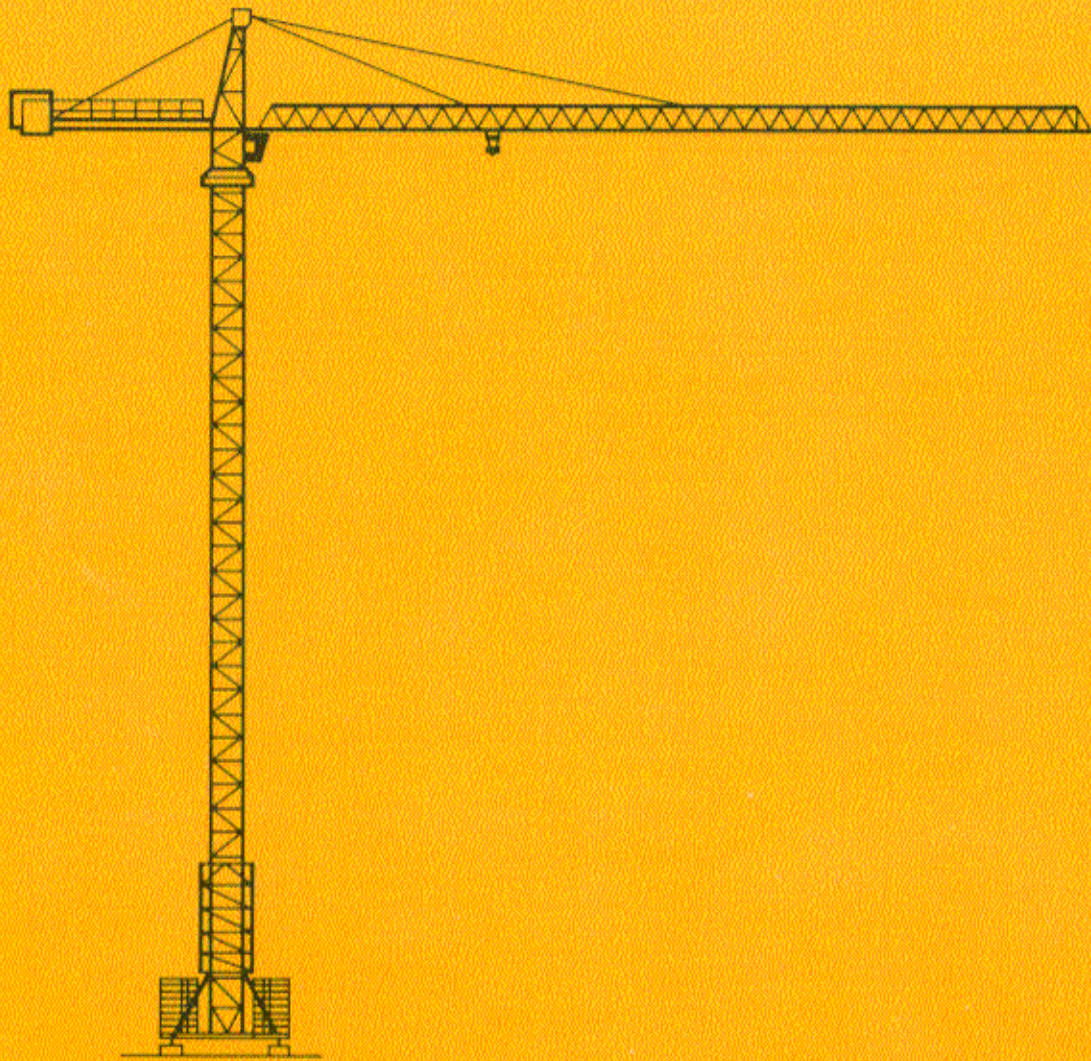


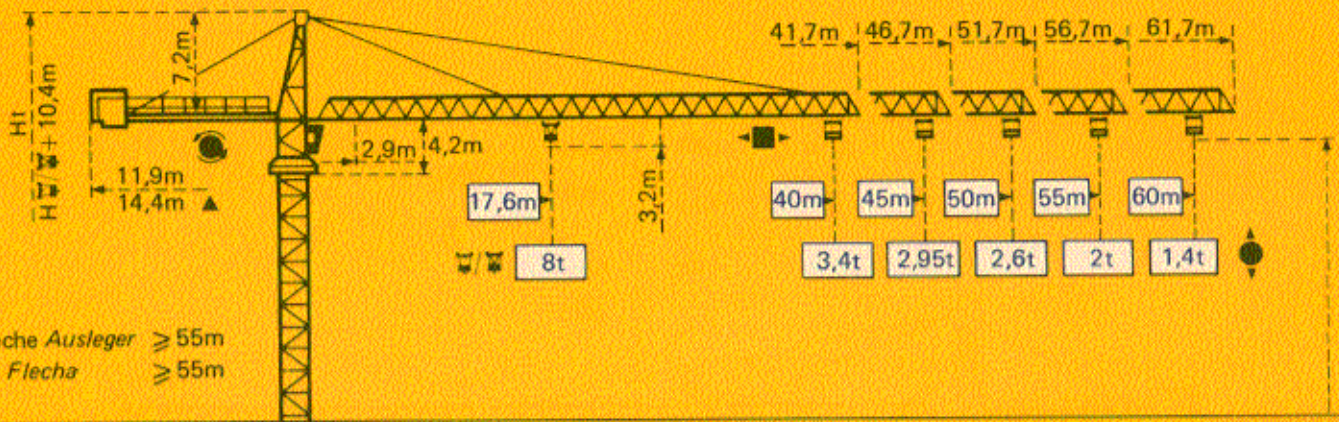
4/15/88



TOPKIT H20/14C

SERVICE TECNICO-COMMERCIO
SCULLY

POTAIN 



▲ Flèche Ausleger ≥ 55m
▲ Jib Flecha ≥ 55m

Măture Mast Mast Mástil

□ 1,6m x 1,6m

Măture Mast Mast Mástil

□ 2m x 2m

PA 459

SB 459

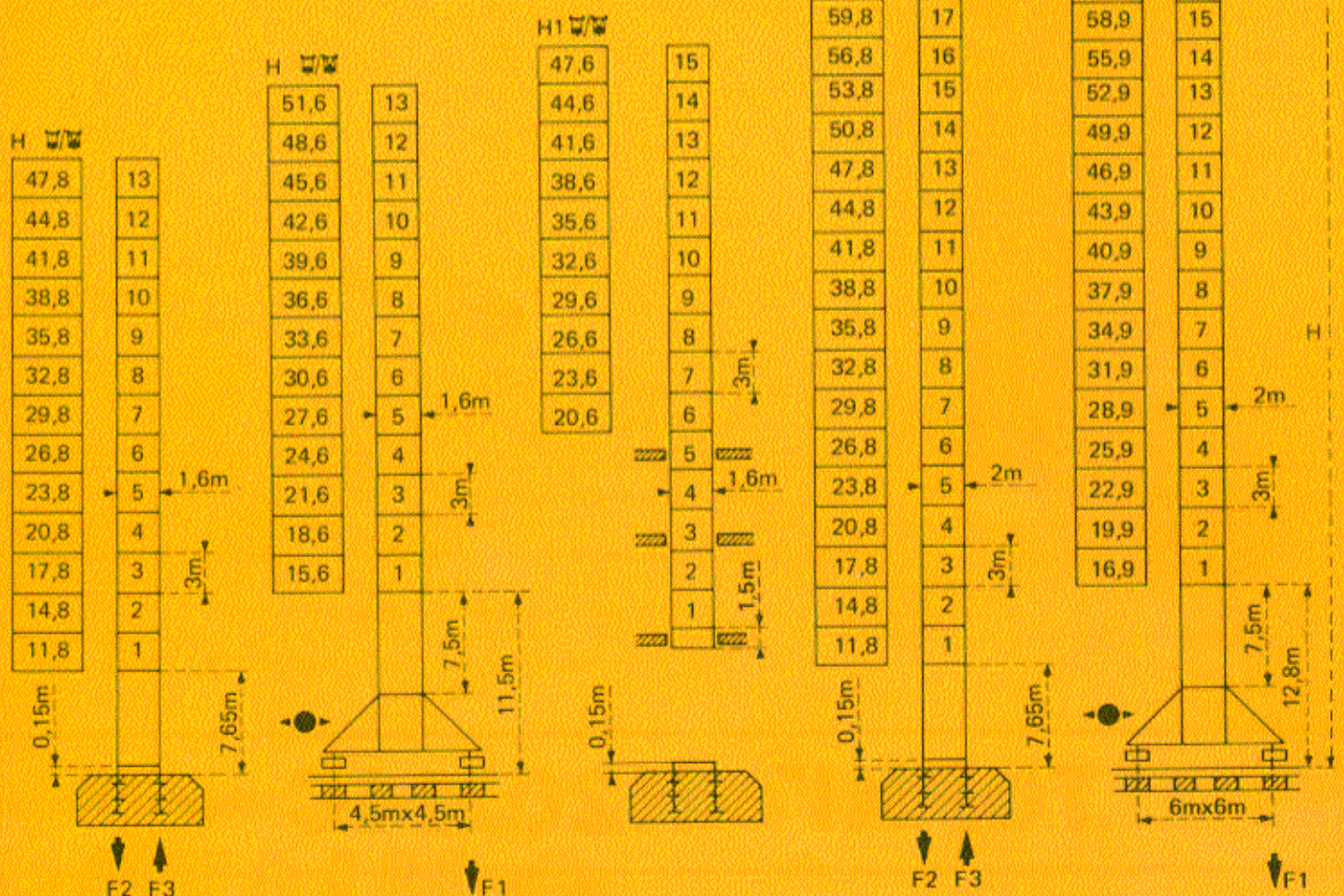
BA 45A

PA 663

VB663

Flèche Ausleger Jib Flecha ≤ 55m

$$H_{\square} = H_{\square/\square} + 0.7m$$



F = Réactions Eckdrücke Reacciones Reacciones

F2	● 102t	■ 130t
F3	● 70t	■ 103t
	39t	

F1	● 76t	■ 94t
	47t	

Voir ci-contre
Siehe nebenstehend
See opposite
Ver página opuesta

F2	● 108t	■ 165t
F3	● 69t	■ 132t
	49.5t	

F1	● 86t	■ 115t
	62.5t	

Courbes de charges

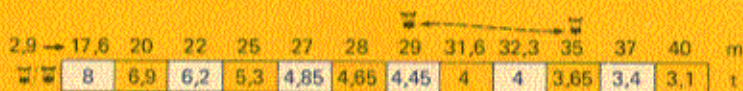
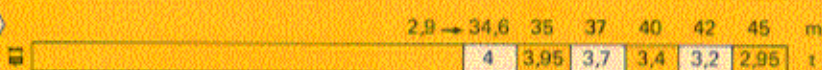
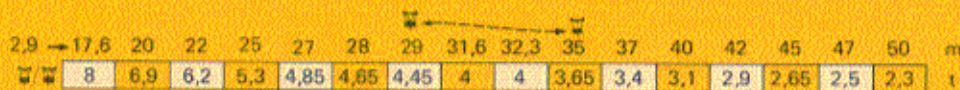
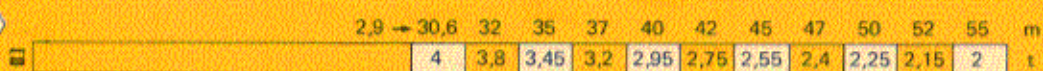
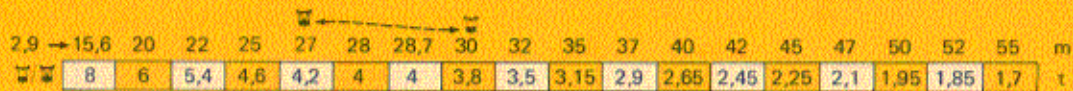
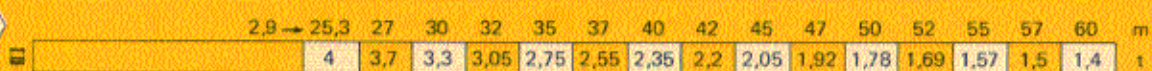
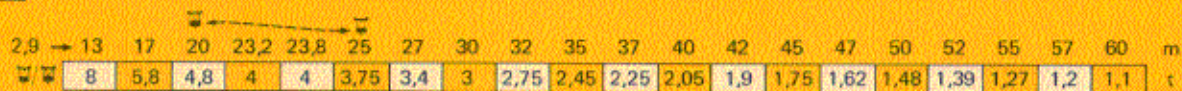
Lastkurven

Load diagrams

Curvas de cargas



Flèche Ausleger Jib Flecha



☐ Chariot standard 2/4 brins.
(En cas d'utilisation ☐ déduire 0,1 t aux charges ☐.)
☐ Chariot optionnel 2 brins uniquement.

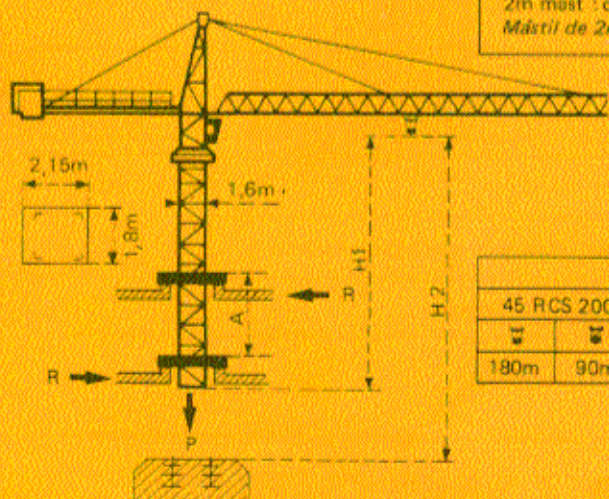
☐ Standardlaufkatze 2/4 Stränge. (Bei Einsatz von ☐ ist 0,1 t der Lasten von ☐ abzuziehen.)
☐ Laufkatze in Sonderausführung mit nur 2 Strängen.

☐ Standard trolley 2/4 fall. (When using ☐ subtract 0,1 t from the loads ☐.)
☐ Optional trolley 2 fall only.

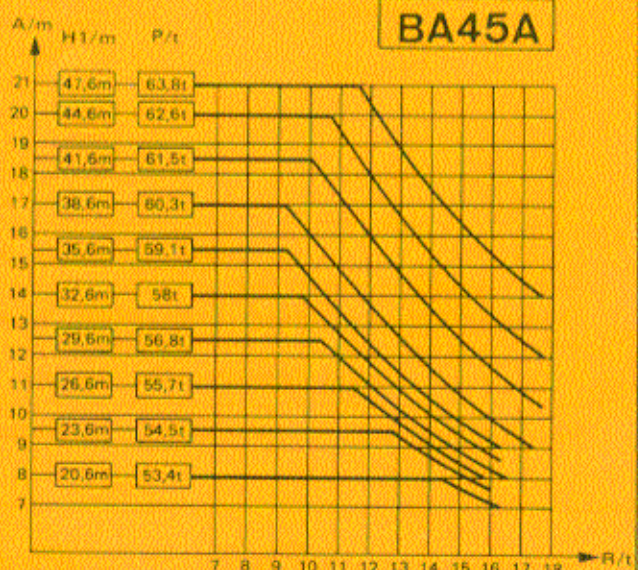
☐ Carro standard 2/4 ramales. (En caso de utilización ☐ quitar 0,1 t de las cargas ☐.)
☐ Carro opcional en 2 ramales solamente.

Télescopage sur dalles - Ketterkrane im Gebäude
Climbing crane - Telecopage gruas trepadoras

Mât de 2m : nous consulter
Mast von 2m : Auf Anfrage
2m mast : consult us
Mástil de 2m : consultarnos



H2			
45 RCS 20C		33 PC 20C	
☐	☐	☐	☐
180m	90m	150m	75m



A Distance entre cadres
H1 Hauteur grue
P Poids de la grue
R Réaction horizontale

A Abstand zwischen den Rahmen
H1 Kranhöhe
P Krangewicht
R Horizontalkräfte

A Distance between collars
H1 Crane height
P Crane weight
R Horizontal reaction

A Distancia entre marcos
H1 Altura grúa
P Peso de la grúa
R Reaccion horizontal

● En service
■ Hors service

● In Betrieb
■ Ausser Betrieb

● In service
■ Out of service













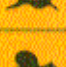








● En servicio
■ Fuera de servicio

☐ A vide sans lest avec flèche et hauteur maximum.

☐ Ohne Last und Ballast mit Maximalausleger und Maximalhöhe.

☐ Without load and ballast with longest jib and maximum height.

☐ Sin cargas, sin lastre con flecha y altura máxima

				m/min	t		ch-PS hp	kW			
Levage Heben Hoisting Elevación	45 RCS 20 C 			0 → 40	4	361 m >361 m *	45	33			
				0 → 80	2						
				0 → 20	8						
				0 → 40	4						
	33 PC 20 C 			5,4	4				299 m >299 m *	33	24
				30	4						
				60	2						
				2,7	8						
				15	8						
				30	4						
	Distribution - Katzfahren Trolleying - Distribución		6 DPC 4	7,5 30 60				6	4,4		
	Orientation - Schwenken Siewing - Orientación		OMD 45	0 → 0,7 tr/min U/min-rpm				12	8,8		
Translation Kranfahren Travelling Traslación	SB 459  R ≥ 10m	RT 324	12,5-25				2 x 7	2 x 5,2			
		TCV 449 ARC H ≤ 33,6m	10 - 50				4 x 6,8	4 x 5			
	VB 663  R ≥ 13m	RT 443 A1 2V	15 - 30				4 x 5	4 x 3,7			
		TCV 649 ARC H ≤ 43,9m	10 - 50				4 x 6,8	4 x 5			
Réseau - Netzstrom - Mains supply - Red							380 V - 50HZ				
Puissance électrique nécessaire - Anschlusswert - Necessary electric power - Potencia eléctrica necesaria							RCS : 70 kVA PC : 50 kVA				
Groupe électrogène - Stromaggregat - Generator set - Grupo electrogeno							*				

* Nous consulter - Auf Anfrage - Consult us - Consultarnos

Conforme à la directive CEE 84/534 sur le niveau acoustique - In compliance with the EEC 84/534 Instruction on noise level
 Gemäss EWG-Richtlinie 84/534 über Schall-Leistungspegel - Conforme con la directiva CEE 84/534 sobre el nivel acustico

NF E52081 - 82

POTAIN

18, rue de Charbonnières, B.P. 173-F 69132 ECULLY Cedex
 Tél. 72.20.20.20 - Télex 330 179 - Télex. Export 375 213 -
 Fax 72 20 20 00

POTAIN GmbH 6082 MÖRFELDEN WALLDORF
 Nordendstr. 79-87 - Postfach 420
 Tél. 06 105 704.0 - Télex 4.1857 45

TOPKIT H20/14C

Réf. 1988.03 KUE 1